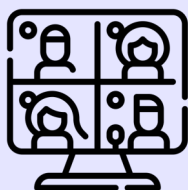


Autism Mental Health Peer Support Groups



FREE online mental health-focused peer support groups for autistic adults in Bradford, Airedale, Wharfedale and Craven, run by the Autism AIM - Mental Health Equity Project



Online groups will be on the **first Wednesday of the month** from **6pm-7pm**.



A different topic will be discussed in every group session, with useful resources provided.

How to join our groups



Make a referral to us online by visiting tinyurl.com/bradfordaimref and we will send information about joining our online groups